



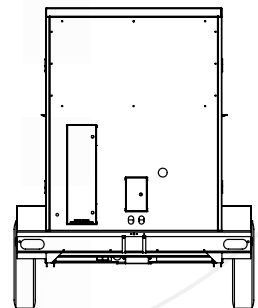
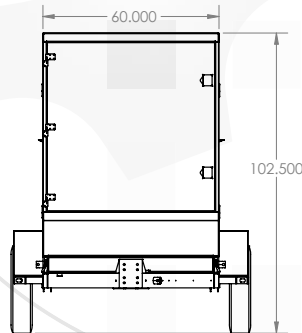
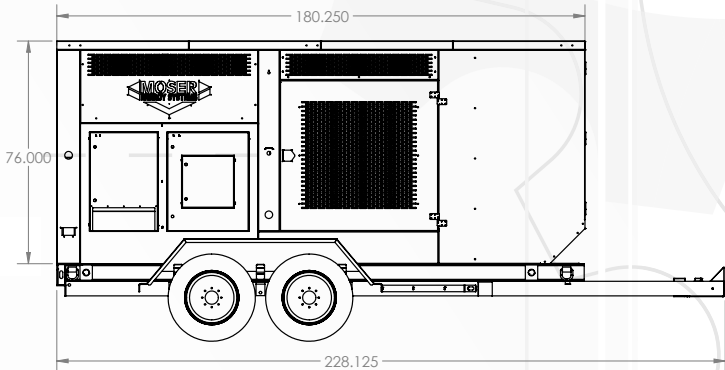
DRC130



Prime/Continuous Duty Generator Set

DRC130 UNIT SPECS

24/7 PRIME POWER KW (KVA)	130 kW (162 kVA)
ENGINE PRIME RATING HP (KW)	201 HP
GENERATOR RATING KW (KVA)	169 kW (212 kVA)
MAXIMUM AMP RATING	195
SIZE OF UNIT	14' X 6'8.5" - TONGUE IS 4'9"
WEIGHT OF UNIT	9,080 LBS



800.584.9833 | MOSERES.COM

ELECTRICAL DATA

Insulation System	Class H
Stator Winding	Double Layer Concentric
Winding Pitch	Two Thirds
Winding Leads	12
Winding Number	311
Number of Poles	4
IP Rating	IP23
RFI Suppression	BS EN 61000-6-2 & BS EN 61000-6-4, VDE 0875G, VDE 0875N. refer to factory for others
Waveform Distortion	NO LOAD < 1.5% NON-DISTORTING BALANCED LINEAR LOAD < 5.0%
Short Circuit Ratio	1/Xd
Steady State X/R Ratio	2.06

	50 Hz				60 Hz			
Telephone Interference	THF < 2%				TIF < 50			
Cooling Air	0.514 m³/sec 1090 cfm				0.617 m³/sec 1308 cfm			
Voltage Star	380	400	415	440	416	440	460	480
kVA Base rating for Reactance Values	182	182	182	N/A	205	218	218	231

60 Hz

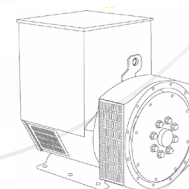
Class - Temp Rise	Cont. F - 105/40°C				Cont. H - 125/40°C				Standby - 150/40°C				Standby - 163/27°C			
Series Star (V)	416	440	460	480	416	440	460	480	416	440	460	480	416	440	460	480
kVA	192.8	199.0	199.0	212.2	205.0	218.5	218.5	231.4	213.0	228.8	228.8	250.0	218.5	234.0	234.0	253.3
kW	154.2	159.2	159.2	169.8	164.0	174.8	174.8	185.1	170.4	183.0	183.0	200.0	174.8	187.2	187.2	202.6
Efficiency (%)	92.4	92.7	92.9	93.0	92.2	92.4	92.7	92.7	92.0	92.2	92.5	92.5	91.9	92.1	92.4	92.5
kW Input	166.9	171.7	171.4	182.5	177.9	189.2	188.6	199.7	185.2	198.5	197.9	216.2	190.2	203.3	202.6	219.1

EXCITATION AND VOLTAGE REGULATORS

AVR Type	MX321	MX341		
Voltage Regulation	±0.5%	±1%	with 4% Engine Governing	
Excitation Type	Self-Excited	PMG		

No Load Excitation Voltage (V)	10
No Load Excitation Current (A)	0.5
Full Load Excitation Voltage (V)	36
Full Load Excitation Current (A)	1.8
Exciter Time Constant (seconds)	0.065

STAMFORD UCI274G
Winding 311



Optional voltages and frequencies available.



DSE8610 MKII

**SYNCHRONISING & LOAD SHARING
AUTO START CONTROL MODULE**

- Comprehensive synchronizing & load sharing capabilities.
- Built in governor and AVR control.
- Base load (kW export) control.
- Positive & negative kVAr export control.
- Mains (Utility) decoupling protection.
- 4-Line back-lit LCD text display.
- Multiple display languages.
- Five key menu navigation.
- LCD alarm indication.
- Heated display option available.
- DSENet expansion capability.
- Data logging & trending facility.
- Protections disable feature.
- Front panel configuration with PIN protection.
- Power save mode.
- 3 phase generator sensing and protection.
- Generator current and power monitoring (kW, kvar, kVA, pf).
- kW and kvar overload alarms.
- Reverse power alarms.
- Over current protection.
- Unbalance load protection.
- Breaker control via fascia buttons, one variant.
- Real-time clock.
- Engine run-time scheduler.
- Fuel usage monitor and low fuel level alarms.
- Simultaneous use of all communication ports.
- Remote SCADA monitoring via various DSE software applications.
- MODBUS RTU & TCP support with configurable MODBUS pages for integration into building management systems (BMS).
- Optional Advanced SMS messaging capability. (Additional external modem required.)
- 3 configurable maintenance alarms.
- Power modes for when in parallel with the mains.

Standard Options: Heavy Duty Trailer • Fuel Scrubber • Low-Noise Enclosure • Oil Make-Up • Auto-Switching Propane Kit • Integrated Paralleling Gear.

Available Options: Cold Weather Package • Multiple Voltages at 50 Hz and 60 Hz • Ultra-Low Emissions Package • Engine Block Heater.

GENERAL ENGINE DATA		STD	METRIC	1500		1800	
Type	N/A	N/A	In-Line 4 cycle				
Number of cylinders	N/A	N/A	6				
Aspiration	N/A	N/A	Turbo Charged Air Cooled				
Bore	in	mm	4.37	111	4.37	111	
Stroke	in	mm	5.47	139	5.47	139	
Displacement	in ³	L	492	8.1	492	8.1	
Compression ratio	N/A		10.5				
RPM Range (Min-Max)		RPM	1500-2000				
Rotation Viewed from Flywheel		N/A	Counter Clockwise				
Firing Order		N/A	1-5-3-6-2-4				
Dry Weight							
Fan to Flywheel	lb	kg	2200	998	2200	998	
Rad to Flywheel	lb	kg	2660	1207	2660	1207	
Wet Weight							
Fan to Flywheel	lb	kg	2288	1042	2288	1022	
Rad to Flywheel	lb	kg	2860	1311	2860	1292	

EXHAUST SYSTEM						
Type			Watered Cooled Manifold			
Maximum allowable back pressure	in HG	kPa	3	10.2	3	10.2
Standard catalyst back pressure	in HG	kPa	1.5	5.1	1.5	5.1
Exhaust outlet pipe size						
Maximum turbine inlet temperature	F	C	1382	750	1382	750
Exhaust flow at rated power	lb/hr	kg/hr	1241	563	1481	672
Exhaust flow at rated power @ 1350F	cfm	m ³ /min	946	26.8	1129	31.9

AIR INDUCTION SYSTEM						
Maximum allowable intake air restrictions with air cleaner						
Clean	in H2O	kPa	5	1.24	5	1.24
Dirty	in H2O	kPa	15	3.74	15	3.74
Combustion air required (entire engine)	lb/hr	kg/hr	1171	531	1397	634
Combustion air required (entire engine)	cfm	m ³ /min	297	8	355	10

ELECTRICAL SYSTEM						
Cold cranking current						
Engine only		CCA	900			
Engine with drive train		CCA	900			
Maximum allowable resistance of starting circuit		Ohms	0.002			
Starting motor power	HP	kW	6.0	4.5	6.0	4.5
Voltage		Volts	24			
Current		Amps	45			
Coil primary resistance		Ohms	0.59Ω ±10%			
Spark plug p/n			IFR7F-4D			
Spark plug gap	Inches	mm	.015" (-0/+0.008") .38mm (-0/+0.2mm)			

COOLING SYSTEM						
Coolant capacity						
Engine only	gal	L	5	22.7	5	22.7
Engine with radiator	gal	L	17.5	80	17.5	80
Engine coolant flow	gal/min	L/min	53	200	63	240
Heat rejected to cooling water at rated load	btu/min	kcal/sec	7690	32.3	9357	39.3
Maximum intake air temperature (IAT)	F	C	155	68	155	68
Heat rejection per CAC	btu/min	kW	TBD		760	13.4